

# Frequently Asked Questions

## Apollo Bay Recreation Reserve



### WHAT'S HAPPENING AT THE RESERVE?

The Great Ocean Road Coast and Parks Authority (the Authority) is working with the community to develop a Masterplan for Apollo Bay Recreation (the Reserve). The Masterplan is a key document to deliver improved sporting and community facilities for Apollo Bay, and to provide customised tourist accommodation options for visitors. The Masterplan will guide the future land use and development of the Apollo Bay Recreation Reserve to achieve identified outcomes for the local community, visitors to the region, the environment and Traditional Owners. In preparing the draft Masterplan, we took on what we heard last year through the Issues and Opportunities community engagement, and what we learned from other key stakeholder feedback. The draft Masterplan addresses these factors and seeks to balance the needs of all users.

### WHAT'S DIFFERENT ABOUT THE NEW LAYOUT OF THE RESERVE?

There will be three precincts:

**Community Precinct** - A central community hub with facilities for a wide range of community events and activities.

This includes:

- a new pavilion with public picnic and barbecue facilities
- more open space with pathways and continuous public access along the entire Barham River foreshore
- greater access for people of all abilities in the design of the new pavilion, toilets, showers, camp kitchen, tents, and playground.

**Sporting Precinct** - Improvements to existing sporting facilities, including:

- new football/netball/cricket/tennis clubrooms and change rooms, which comply with sporting facility design guide lines/standards for local level facilities
- new netball/tennis court area to meet safety codes and sporting facility guidelines
- one additional cricket practice net in line with cricket facility guidelines.

**Camping Precinct** – Changes to the camping precinct including:

- A new seasonal campground in the southern part of the Reserve, with sites operating from September to April, and the grassed area available for general community use and events from May to August.
- A year-round accommodation precinct in the northern part of the Reserve, providing 14 tourist cabins, 10 accessible glamping tents and 10 smaller pop-up tents,
- A new amenities building, barbecue shelter and open communal space.

### WHO WILL FUND THE UPGRADES?

Funding for the project includes \$2m from the Department of Jobs, Skills, Industry and Regions, \$500,000 from a Visitor Experience Uplift Grant (Department of Energy, Environment and Climate Action) and \$427,000 from the Great Ocean Road Coast and Parks Authority. Further improvements will require additional grant funding to be sought (or other funding sources as appropriate).



**GREAT OCEAN ROAD**  
COAST & PARKS AUTHORITY



Continue the story.  
[www.greatoceanroadauthority.vic.gov.au](http://www.greatoceanroadauthority.vic.gov.au)





## WHAT'S THE TIMING OF THE PROPOSED CHANGES – HOW LONG WILL IT TAKE?

The draft Masterplan is a 10-year plan. The implementation plan outlines the proposed changes over a short, medium and long term timeframe.

## HOW DOES THIS MASTERPLAN RELATE TO THE COMMUNITY INFRASTRUCTURE PLAN?

The Apollo Bay Recreation Reserve features in the [Apollo Bay, Skenes Creek, and Marengo Community Infrastructure Plan \(CIP\)](#) and refers to the requirement for a Masterplan process for the Reserve. Like the draft Masterplan for the Reserve, the CIP presents a long-term vision, principles, and concepts and ideas for the communities of Apollo Bay, Skenes Creek and Marengo. The CIP was prepared as a joint initiative between the Colac Otway Shire Council and the Great Ocean Road Coast and Parks Authority.

## WHAT'S HAPPENING WITH THE CAMPING UPLIFT PROJECT?

In early 2022, we began working on a concept plan for the [Camping Uplift](#) project. This project has funding to upgrade the camping facilities and provide for all-abilities access to camping and other camping infrastructure. Part of the early proposals sought to relocate some of the Annual permit sites to introduce a new central camp kitchen and playground area (camping hub). This project was put on hold in October 2022 due to new flood risk information, requiring a reassessment of the project.

## WHY ARE ANNUAL PERMITS BEING DISCONTINUED AT THE APOLLO BAY RECREATION RESERVE?

As a result of the Masterplan process, which assesses the current and future uses of the Reserve, Annual permits (caravans with fixed annexes) have been reviewed. There are several issues affecting Annual permits, which together lead to the view that this type of accommodation is no longer an appropriate fit for the Reserve. These issues include:

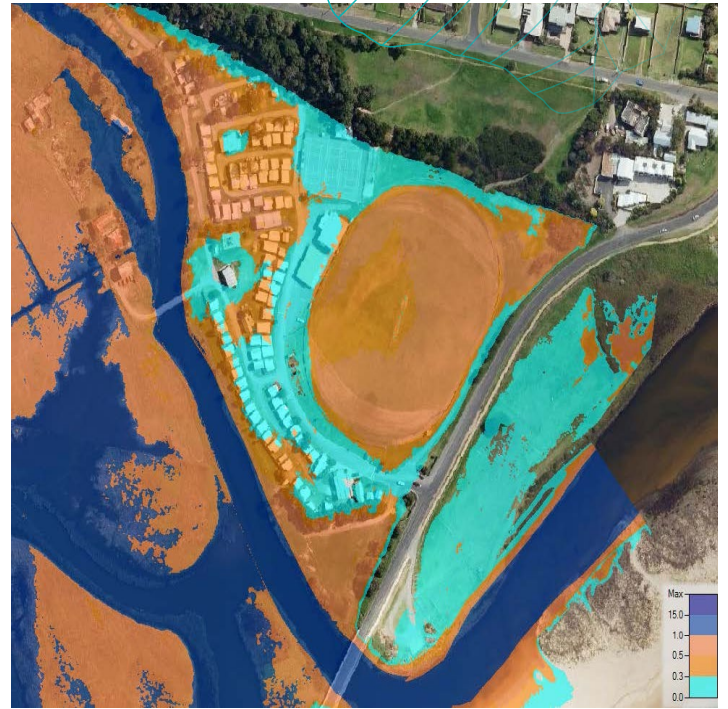
- balancing the competing demands for the use of the reserve (community use, sport and recreation, events and camping)
- responding to the local impacts of climate change, specifically flood risk, and complying with actions in the [Corangamite Regional Floodplain Management Strategy 2018-2028](#).
- providing equitable access to Crown land caravan parks, as described in the Victorian Government's [Improving Equity of Access to Crown Land Caravan and Camping Parks 2019](#).

## WHAT ABOUT SEASONAL WORKER ACCOMMODATION?

Options for seasonal worker accommodation at the Reserve will be identified during the Masterplan's implementation phase. Suggestions have included allocating a section of the Reserve's campsites for seasonal workers at a discounted weekly rate over the summer period, providing the workers meet certain criteria (e.g., More than 25 hours per week work in the Apollo Bay area). This was trialled in Lorne last summer at one of our parks and is proposed to be trialled at the Apollo Bay Recreation Reserve over or the 2023-24 summer.







The maps shown here indicate the 1% Annual Exceedance Probability (AEP) riverine flood depth mapping coinciding with a 10% AEP storm tide event based on 2030 climatic conditions on the left, and 2100 climatic conditions on the right.

### CAN YOU EXPLAIN WHY THE RESERVE IS SUBJECT TO INCREASED FLOOD RISK.

As part of the Masterplan investigations, updated flood modelling was sought from the Corangamite Catchment Management Authority, as managers of the local floodplain and river systems and authors of the Corangamite Regional Floodplain Management Strategy 2018 - 2028. With regards to climate change in the Corangamite region, the Strategy notes an increase in severe weather events, with less rainfall but more intense rainfall events. Projections are for sea levels to rise and for there to be an increase in extreme natural events such as floods. Apollo Bay is identified as a priority risk area in the regional risk assessment, with flood risks associated with the Barham River to the west of town.

The maps shown here indicate the 1% Annual Exceedance Probability (AEP) riverine flood depth mapping coinciding with a 10% AEP storm tide event based on 2030 climatic conditions on the left, and 2100 climatic conditions on the right. In coastal areas like the Reserve, flooding from the river system may combine with inundation from the sea, increasing the extent of flooding. At this site, there is ongoing flood risk, regardless of how recently there was a similar flood. The frequency and intensity of these hazards are expected to increase due to the impacts of climate change, and there will be an increased risk to human safety, buildings, and infrastructure.

### WILL THE SPORTING FACILITIES BE SUBJECT TO FLOOD RISK IN THE FUTURE?

Yes. The flood modelling for 2100 shows the football oval is at greater flood risk. We will manage this risk over time, through regular review with the Corangamite Catchment Management Authority, community and user group consultation.



**GREAT OCEAN ROAD**  
COAST & PARKS AUTHORITY



Continue the story.  
[www.greatoceanroadauthority.vic.gov.au](http://www.greatoceanroadauthority.vic.gov.au)